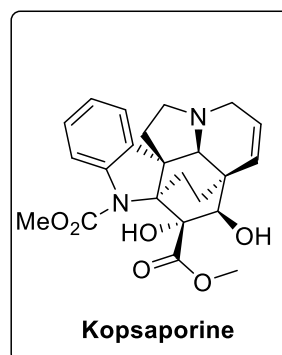
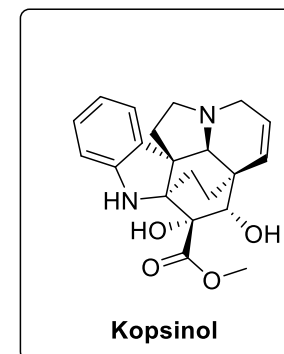


18) NaBH₄, MeOH, 0 °C
19) K₂CO₃, ClCO₂Me, CH₂Cl₂
20) TMSOTf, CH₂Cl₂, 2,6-ditertPy,
MeOTf, reflux, NaBH₄, TFE,
0 °C, 80 %



21) NaOMe, MeOH, 90 °C, 77 %



22) KO^tBu, THF, RT, 88 %

