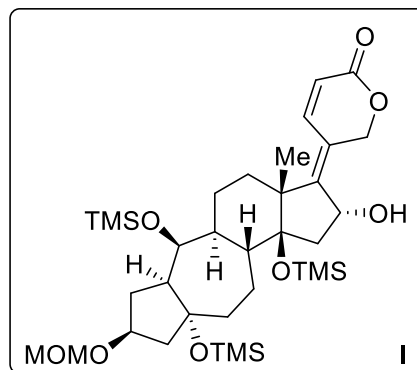


23) **R3**, Pd(dppf)Cl₂
K₃PO₄, DMF/H₂O, 60 °C

24) *m*-CPBA, DCM
then BH₃•DMS

54%



25) DMP, NaHCO₃

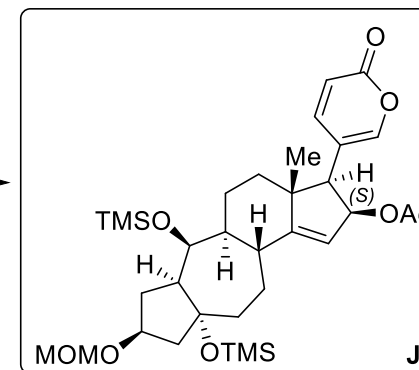
26) DBU, THF

then LiHMDS, -98 °C

27) (*R*)-CBS, BH₃•DMS
then Ac₂O, DMAP

57%

*Hint: S-epimer
was obtained*



28) NBS, NaOH, Me₂CO/H₂O

then TBAF

29) PDC, DCM

30) LiBF₄, MeCN/H₂O

32%

