

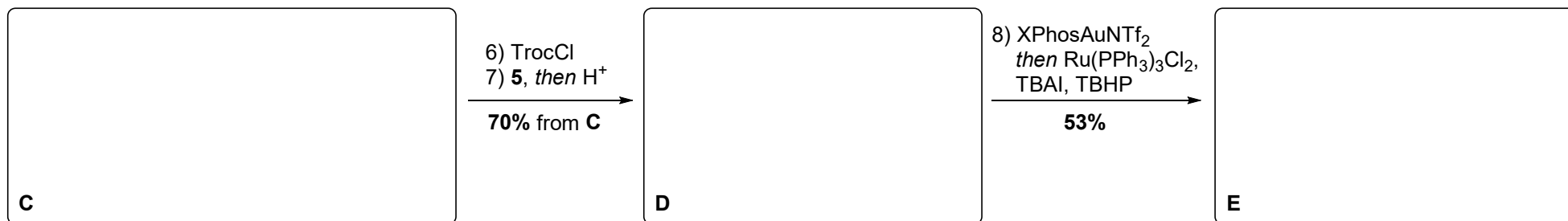
3) NaOCl, TEMPO  
then 2, then DMP

60%

4) TFA, 72%

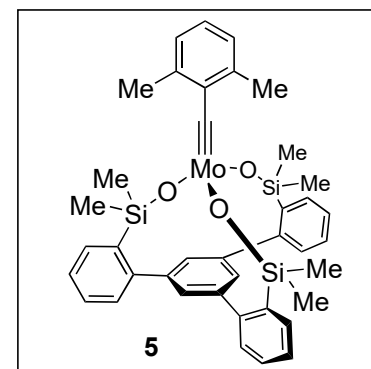
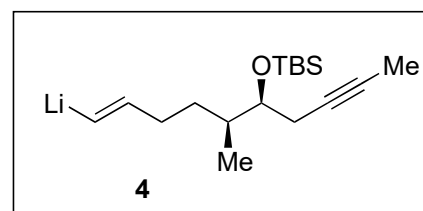
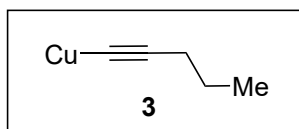
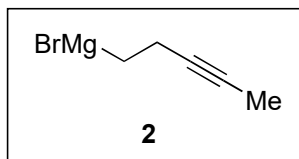
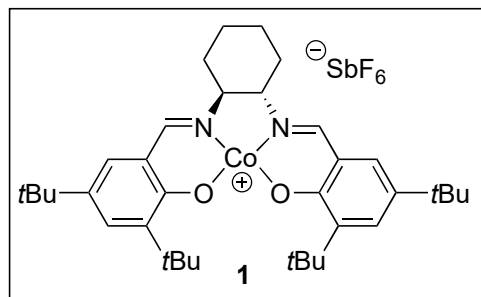
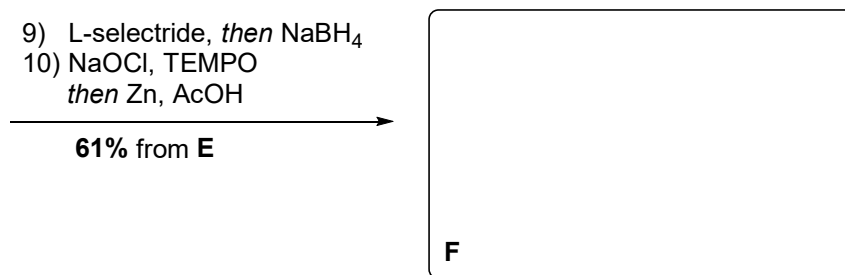
5) [3], 4,  
then Comins' reagent, 70%

Structure of Comins' reagent?



8) XPhosAuNTf<sub>2</sub>  
then Ru(PPh<sub>3</sub>)<sub>3</sub>Cl<sub>2</sub>,  
TBAI, TBHP

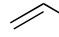
53%





11) TBSOTf, DMDO, 73%  
12) Ac<sub>2</sub>O, then LiOH, 64%



 BF<sub>3</sub>K  
13) Pd(dppf)Cl<sub>2</sub>,  
TEA, *n*-PrOH  
14) DMP, then NH<sub>3</sub>  
88%  
*Finisch it!*<sup>TM</sup>



then  
NaBH<sub>3</sub>CN  
80%  
over 3 steps

