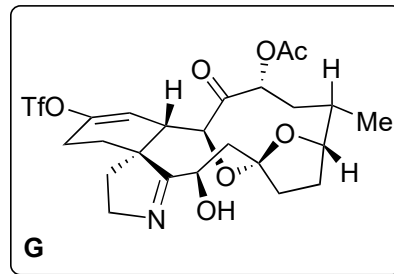
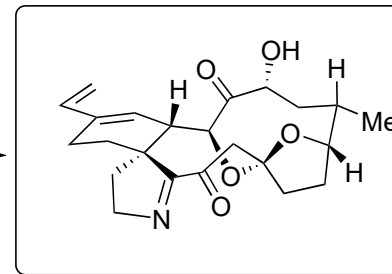




11) TBSOTf, DMDO, **73%**  
12) Ac<sub>2</sub>O, then LiOH, **64%**



$\text{BF}_3\text{K}$   
13) Pd(dppf)Cl<sub>2</sub>,  
TEA, *n*-PrOH  
14) DMP, then NH<sub>3</sub>  
**88%**  
*Finisch it!*<sup>TM</sup>



then  
NaBH<sub>3</sub>CN  
**80%**  
over 3 steps

